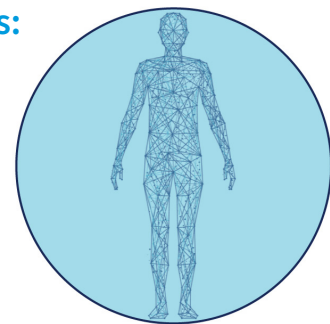


Neurology and Mental Health

TUESDAY 1 MARCH 2022 (13:30–15:30 CET)



Agenda

| Chair: Dévora Kestel | | |
|----------------------|--|--|
| Time | Topic | Speaker |
| 13:30–13:35 | Welcome remarks | Ms Dévora Kestel Director, Department of Mental Health and Substance Use, WHO, Geneva, Switzerland |
| 13:35–13:45 | WHO activities for post COVID-19 condition | Dr Janet Diaz Lead, Clinical Management, Health Emergencies Programme, WHO, Geneva, Switzerland |
| 13:45–14:00 | Experiencing post COVID-19 condition | Dr Nasser Loza President Elect, World Federation of Mental Health, Cairo, Egypt Moderator: Dr Mark van Ommeren, Coordinator, Mental Health Unit, WHO, Geneva, Switzerland |

Part 1: Neurology and post COVID-19 condition

| | | |
|-------------|---|--|
| 14:00–14:10 | Introduction to neurological manifestations in post COVID-19 condition | Dr Alla Guekht Director, Moscow Research and Clinical Center for Neuropsychiatry; Professor of Neurology, Russian National Research Medical University, Russian Federation |
| 14:10–14:20 | Brain fog and cognitive impairment: pathogenesis and clinical presentations | Dr Kameshwar Prasad Professor of Neurology; Director & Chief Executive Officer, Rajendra Institute of Medical Sciences, Ranchi, 834009, Jharkhand, India |
| 14:20–14:30 | Neurological treatment and rehabilitation of post COVID-19 condition: cognition, dysautonomia, dysphagia, dysphonia | Dr Tracy Vannorsdall Associate Professor, Department of Psychiatry and Behavioural Sciences, Department of Neurology, Johns Hopkins School of Medicine, Baltimore, Maryland, USA |

Part 2: Mental health and post COVID-19 condition

| | | |
|-------------|--|--|
| 14:30–14:40 | Clinical aspects and mental health services in post COVID-19 condition | Dr José Luis Ayuso-Mateos Professor and Chairman of the Department of Psychiatry; Director for the WHO Collaborating Centre for Research and Training in Mental Health Services, University of Madrid, Spain |
| 14:40–14:50 | Research update on mental health symptoms in post COVID-19 condition | Dr Marit Sijbrandij Professor in Clinical Psychology; Co-Director of WHO Collaborative Centre of Research and Dissemination of Psychological Interventions, Vrije Universiteit, Amsterdam, the Netherlands |

Part 3: Research tools for post COVID-19 condition

| | | |
|-------------|---|---|
| 14:50–15:00 | Post COVID-19 condition core outcome set: mental health and neurological manifestations | Dr Timothy Nicholson Clinical Senior Lecturer, Institute of Psychiatry Psychology & Neuroscience (IoPPN), King's College London, United Kingdom |
| 15:00–15:10 | Call for action: WHO Clinical Data Platform post COVID-19 CRF | Dr Silvia Bertagnolio Lead, Antimicrobial Resistance, WHO, Geneva, Switzerland |
| 15:10–15:20 | Global consortium studies: neuropsychiatric sequelae of SARS-CoV-2 infection | Gabriel de Erausquin Professor of Neurology and Radiological Science, Joe R and Teresa Lozano Long School of Medicine, University of Texas Health San Antonio, Texas, USA |

Wrap up and closing remarks

| | | |
|-------------|--------------------|---|
| 15:20–15:25 | Webinar conclusion | Dr Tarun Dua Lead, Brain Health, Department of Mental Health and Substance Use, WHO, Geneva, Switzerland |
| 15:25–15:30 | Closing remarks | Dr Maria Van Kerkhove Technical Lead, COVID-19 Response, Health Emergencies Programme, WHO, Geneva, Switzerland |